

# Narnu Farm: Baby Chicks Worksheet



1. It is important that fertile eggs are in a similar environment to which the mother hen provides. What three things does the egg incubator do to create this environment?

a. \_\_\_\_\_.

b. \_\_\_\_\_.

c. \_\_\_\_\_.

2. Approximately how many days does it take for an egg to hatch? Circle the correct answer.

a. 15 days

b. 21 days

c. 26 days

3. What two things are important to have available to baby chicks at all times?

a. \_\_\_\_\_.

b. \_\_\_\_\_.

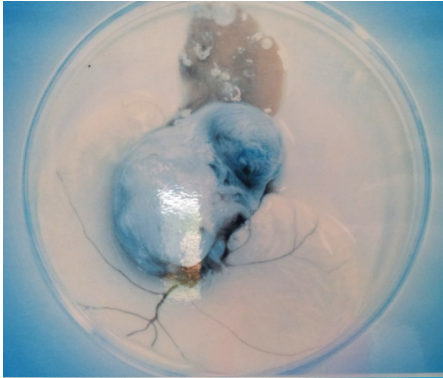
4. How should we hold a baby chicken? Circle the correct answer.

a. With two hands gently cupped underneath the chicken.

b. With one hand cupped underneath the chicken and the other hand gently over the wings.

c. With one hand holding onto the legs and the other hand free to pat the chick.

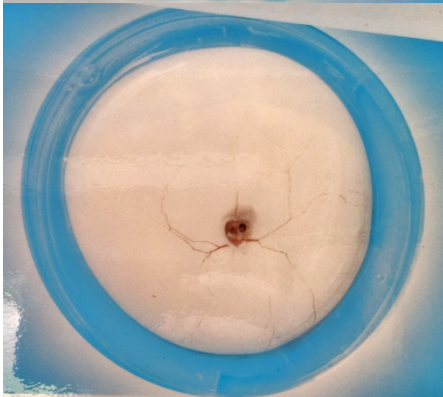
5. Match the picture with the approximate age of the egg.



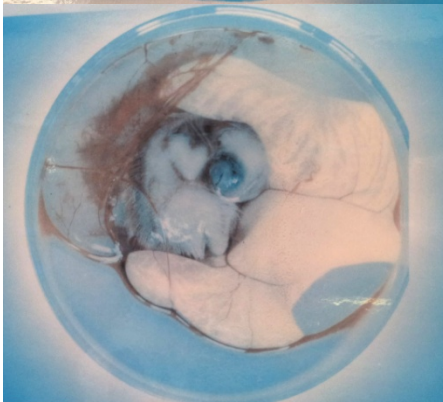
1-8 days



9-13 days



14-17 days



18-20 days